

AONB	Area of Outstanding Natural Beauty	Statutory designation designed to protect nationally important natural landscapes
BAP	Biodiversity Action Plan	Biodiversity Action Plans aim to describe the biological diversity resources of the area that they cover, and set out a detailed plan for conservation management.
BR	Biosphere Reserve	North Devon is a UNESCO Biosphere Reserve because of its blend of special landscapes and wildlife areas, rich cultural heritage and communities that care about it and want to sustain it into the future.
CEFAS	Centre for Environment, Fisheries & Aquaculture Science	A scientific research and advisory centre for fisheries management, environmental protection and aquaculture
CRoW	Countryside and Rights of Way Act	The Act provides a new right of public access on foot to areas of open land comprising mountain, moor, heath, down, and registered common land, and contains provisions for extending the right to coastal land with safeguards for designations, wildlife and land owners/occupiers
DBWPS	Devon Bird Watching and Preservation Society	A Devon wide bird society dedicated to the study and conservation of wild birds
DEFRA	Dept for Environment, Food and Rural Affairs	UK government department responsible for policy and regulations on the environment, food and rural affairs
DSFC	Devon Sea Fisheries Committee	The organisation responsible for the management of sea fisheries in Devon by enforcement of regional, EEC and UK fisheries legislation created to conserve sea fish stocks
DWT	Devon Wildlife Trust	A Devon wide charity that is part of a network of local Wildlife Trusts throughout the UK which help to support and protect wildlife for the future
EA	Environment Agency	An Executive Non-departmental Public Body whose principal aims are to protect and improve the environment, and to promote sustainable development.
EH	English Heritage	English Heritage is the Government's statutory adviser on the historic environment.
FLAG	Fisheries Local Action Group	A voice for local fishing concerns
FWAG	Farming and Wildlife Advisory Group	Farmer led organisation which assists the people who manage the countryside with environmental management expertise.
IFCA	Inshore Fisheries and Conservation Authority	IFCA will take over the management of the Taw Torridge estuary fisheries as the Devon Sea Fisheries Committee (DSFC) will be disbanded in April 2011
LCA	Landscape Character Area	Method of characterising the landscape, such as 'Taw Torridge Estuary Mouth'

LCT	Landscape Character Types	Method of characterising the landscape within each LCA for environmental management it is based on natural and cultural features
LDF	Local Development Framework	A suite of planning documents which has been developed in Northern Devon that will help to deliver the Northern Devon Joint Sustainable Communities Strategy (adopted May 2009).
LDU	Landscape Description Units	Method of characterising the landscape within each LCA for environmental management it is based on natural and cultural features
LNR	Local Nature Reserve	Areas with local wildlife or geological interest that are maintained to encourage biodiversity and promote education and enjoyment of nature by the public
MCA	Maritime and Coastguard Agency	Organisation that promotes safety at sea and protects the marine environment
MCZ	Marine Conservation Zone	A new type of marine protected area that was introduced as part of the Marine and Coastal Access Act 2009 to protect not only rare and endangered species but also the range of marine life of the inshore and offshore waters next to England, Wales and Northern Ireland
MMO	Marine Management Organisation	Established by the UK government under the Marine and Coastal Access Act 2009 to promote sustainable development and encourage clean, healthy, safe, productive and biologically diverse oceans and seas
MPS	Marine Policy Statement	Stage one of the Marine plan as part of the Marine and Coastal Access Act. This statement will encourage integrated and sustainable management of marine resources and will hold legislative weight
MSC	Marine Stewardship Council	International non profit organisation that works to promote sustainable fishing practices globally
MSP	Marine Spatial Plan	Stage two of the Marine plan as part of the Marine and Coastal Access Act. These will be developed at a regional level, with stakeholder engagement throughout.
MVS	Maritime Volunteer Service	Non profit charity which promotes and supports maritime authorities, promotes sea safety and teaches maritime skills
NDABS	North Devon AONB and Biosphere Service (formerly NDCCS)	A partnership organisation hosted by Devon County Council working for the rural environment in northern Devon.
NDCCS	Northern Devon Coast and Countryside Service	See NDABS

NE	Natural England	An independent public body whose purpose is to protect and improve England's natural environment and encourage people to enjoy and get involved in their surroundings
NERC	Natural Environment and Rural Communities Act	The Act requires the Secretary of State to publish a list of habitats and species which are of principal importance for the conservation of biodiversity in England.
PSA	Public Service Agreement	Public service agreements (PSAs) detail the aims and objectives of UK government departments for a three-year period
RNLI	Royal National Lifeboat Institute	Charitable organisation that saves lives at sea and also promotes safety at sea in the UK and RoI
RSPB	Royal Society for the Protection of Birds	Charitable organisation which works towards the protection of Birds in the UK
RYA	Royal Yachting Association	The national body for all forms of boating
SAC	Special Area of Conservation	Areas which have been given special protection under the European Union's Habitats Directive, providing increased protection to a variety of wild animals, plants and habitats
SID	Strategic Investment Framework	Strategy for promoting enterprise that will benefit the economy
SMP	Shoreline Management Plan	A large-scale assessment of the risks associated with coastal processes with the aim of reducing these risks to people and the developed, historic and natural environments
SSSI	Site of Special Scientific Interest	Designation that gives legal protection to areas with scientifically important wild animals plants, geological or physiographical features
TTEF	Taw Torridge Estuary Forum	Volunteer forum of national, regional, county-wide and local member organisations who act as an independent voice for the Estuary
WFD	Water Framework Directive	The European Water Framework Directive 2000 is European legislation which was incorporated into UK law in 2003 and is used to manage the aquatic environment. This included groundwater and its ecology, surface freshwater, estuaries and coastal water out to one mile from low water

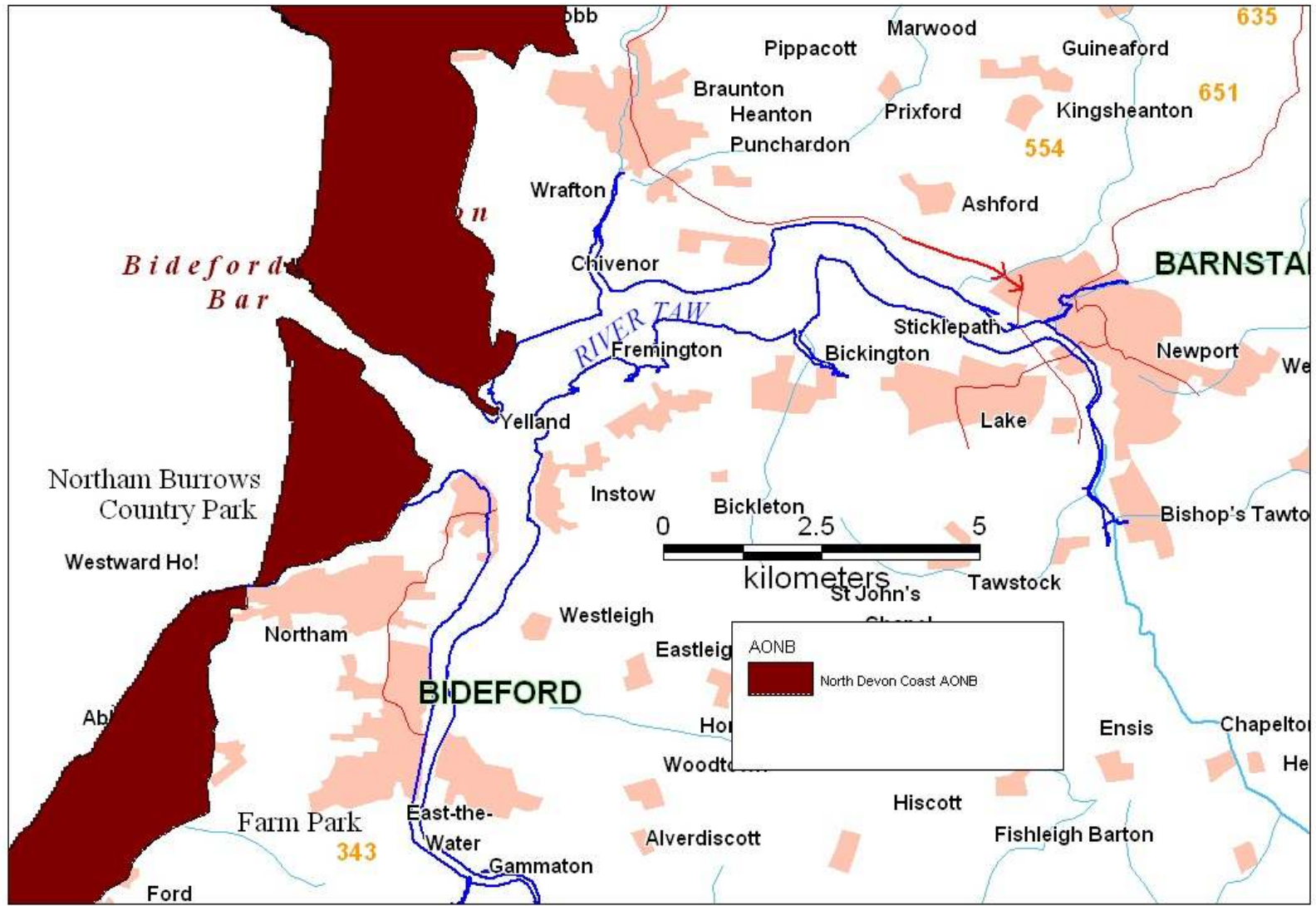


Figure 1 The North Devon Coast AONB

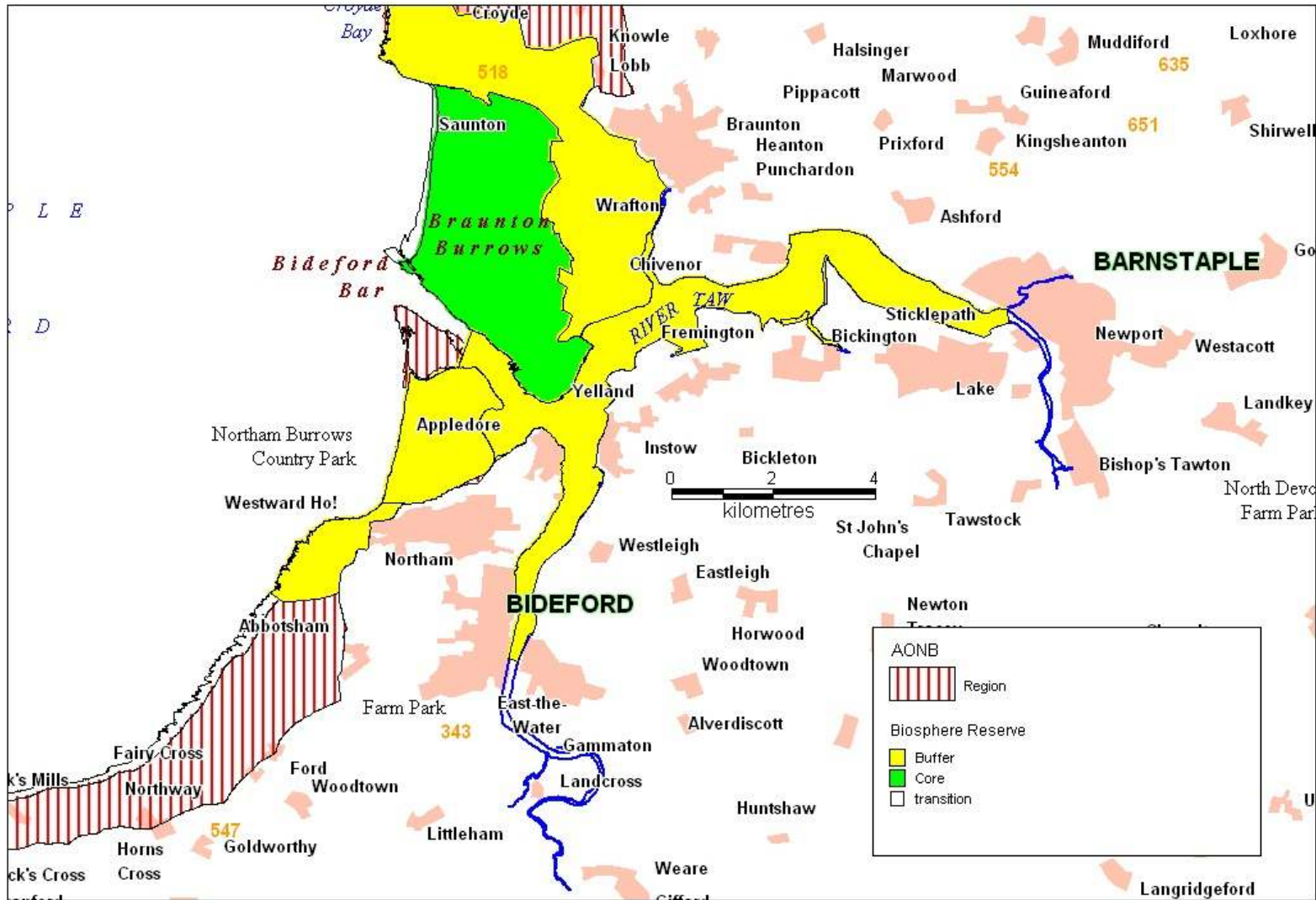


Figure 2 The North Devon Biosphere Reserve

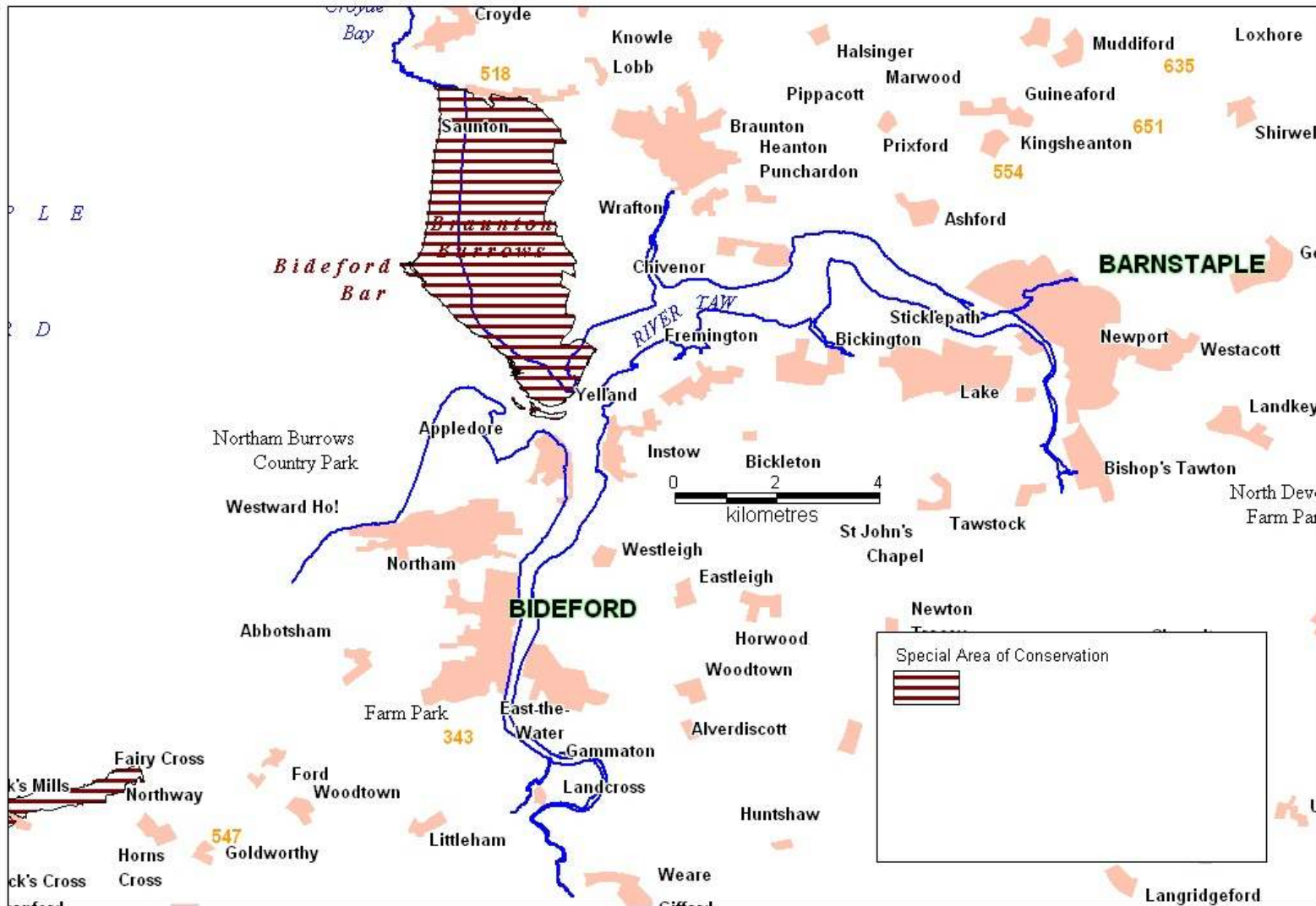


Figure 3 The Special Area of Conservation designation

BAP Broad Habitat type	Specific designated features (NB. may not occur on every component SSSI of multi-SSSI international sites)	Explanatory description of the feature for clarification	SSSI designated interest features	cSAC designated interest features	SPA bird populations dependency on specific habitats			Ramsar criteria applicable to specific habitats			
					Annex 1 species	Migratory species	Waterfowl assemblage	1a Wetland characteristics	2a Hosting rare species &c	3a 20000 waterfowl	3c 1% of population
		- sand/dune pansy <i>Viola tricolour ssp curtisii</i> - <i>Bromus hordeaceus ssp thominii</i>									
	Water Germander <i>Teucrium scordium</i>	Schedule 8 WCA 1981	*								
ACTIVE PROCESS GEOMORPHOLOGICAL (IA)	Active process geomorphological site	Westward Ho! cobble ridge	*								

Table 7 Condition of Taw Torridge Estuary SSSI units

Site:	Taw Torridge Estuary				
Unit number	Unit name	Unit area(Ha)	Current condition	Status	Main habitat
101	Two Rivers Estuary Mouth and the Skern	61.02	Unfavourable declining	Live	littoral sediment
102	River Torridge	295.55	Favourable	Live	littoral sediment
103	River Taw	1018.58	Favourable	Live	littoral sediment

